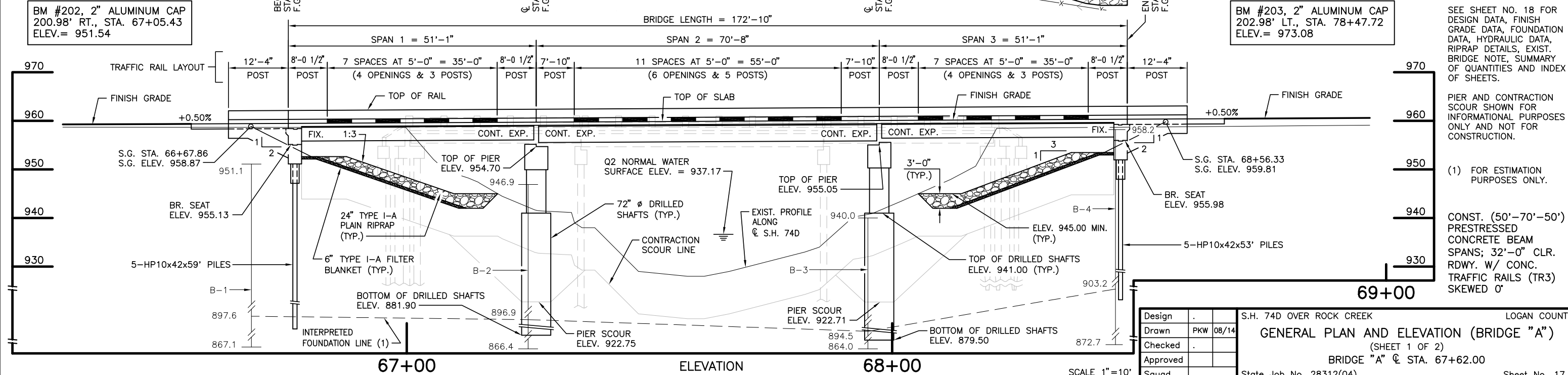


BM #202, 2" ALUMINUM CAP  
200.98' RT., STA. 67+05.43  
ELEV.= 951.54

BM #203, 2" ALUMINUM CAP  
202.98' LT., STA. 78+47.72  
ELEV.= 973.08



NOTES:  
SEE SHEET NO. 18 FOR DESIGN DATA, FINISH GRADE DATA, FOUNDATION DATA, HYDRAULIC DATA, RIPRAP DETAILS, EXIST. BRIDGE NOTE, SUMMARY OF QUANTITIES AND INDEX OF SHEETS.  
PIER AND CONTRACTION SCOUR SHOWN FOR INFORMATIONAL PURPOSES ONLY AND NOT FOR CONSTRUCTION.  
(1) FOR ESTIMATION PURPOSES ONLY.

CONST. (50'-70'-50') PRESTRESSED CONCRETE BEAM SPANS; 32'-0" CLR. RDWY. W/ CONC. TRAFFIC RAILS (TR3) SKEWED 0°

Design	.	S.H. 74D OVER ROCK CREEK	LOGAN COUNTY
Drawn	PKW 08/14	GENERAL PLAN AND ELEVATION (BRIDGE "A")	
Checked	.	(SHEET 1 OF 2)	
Approved	.	BRIDGE "A" @ STA. 67+62.00	
Squad	.	State Job No. 28312(04)	Sheet No. 17

SCALE 1"=10'